

# Relu-Risk: Involving Stakeholders in the Management of Food Chain Risks in the Rural Economy

Simon French (MBS [simon.french@mbs.ac.uk](mailto:simon.french@mbs.ac.uk))

Gary Barker (IFR), John Maule (LUBS),  
Andy Hart (CSL), Richard Shepherd (Surrey U)

# The project

Our aim is to improve the effectiveness and sensitivity with which food chain risks are handled, particularly in relation to impacts on the rural community.

See POSTER this lunch-time

# Participation and e-Participation

- MBS is concerned with how we involve (rural) stakeholders in the process
- How may stakeholders be involved?

# Participation instruments

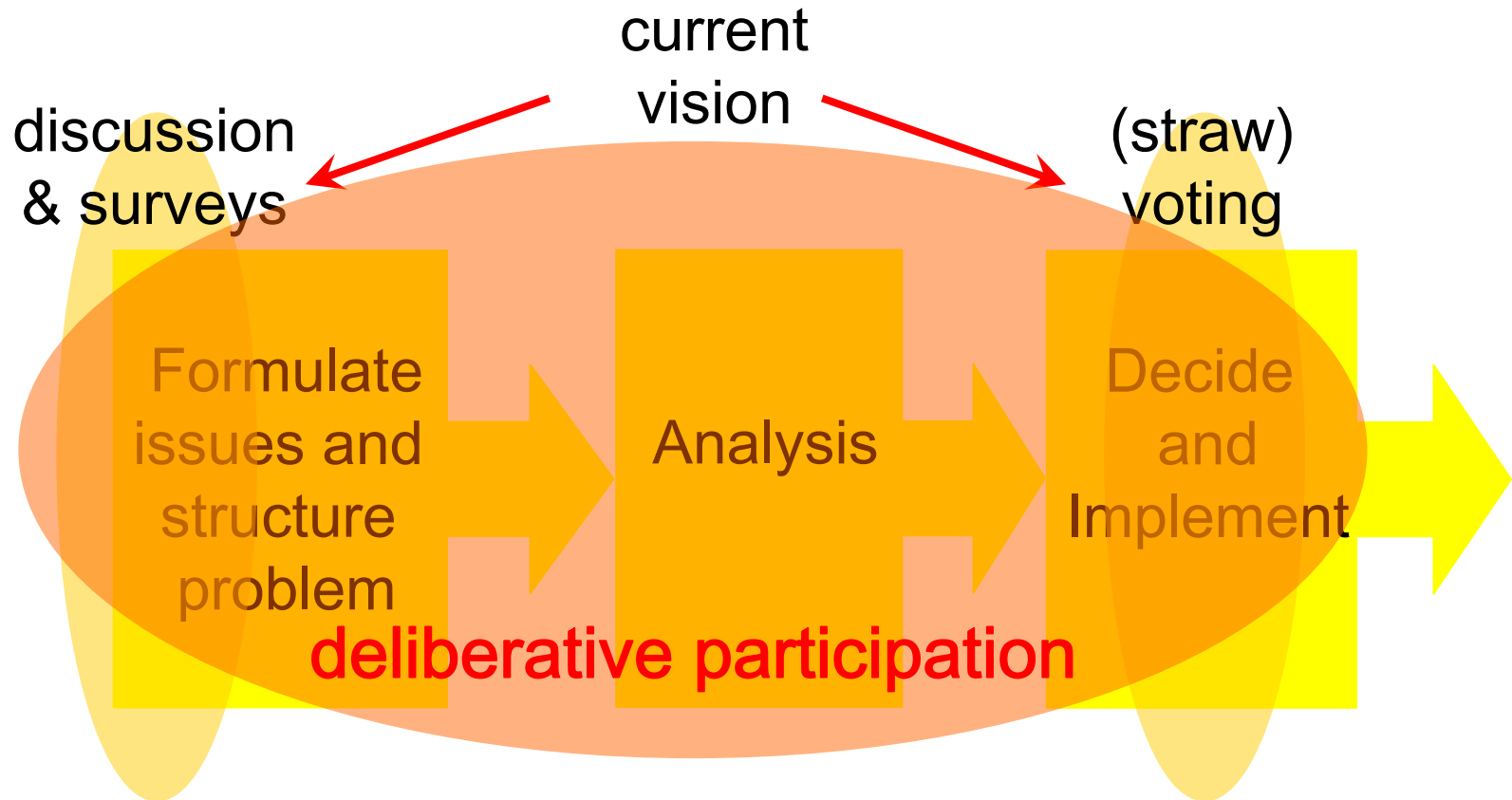
|  |   |  |
|--|---|--|
| Referendums<br>Deliberative Polling<br>Public Hearings/ Enquiries<br>Public Opinion Surveys<br>Negotiated Rule Making<br>Mediation<br>Consensus Conference<br>Citizen Jury/ Planning Cells<br>Citizens Panel<br>Citizen Advisory Committees (CACI)<br>Workshops<br>Study Circles<br>Round Tables<br>Collaborative Watershed Management<br>Focus Groups | Online Discussion Forums<br>e-voting<br>e-polling<br>e-consultation<br>e-mail/email-lists<br>e-panels<br>e-petitions<br>Online Chat<br>Web-pages<br>SMS Messaging<br>Geographic Information System<br>Digital TV<br>Simulation<br>Games<br>Video Broadcasting | Advertisements<br>Informative Programmes<br>Interviews<br>Soap Operas<br>Celebrities<br>News Articles<br>Debates<br>Music<br>Advertisements<br>Programmes<br>Articles<br>Advertisements<br>Letters<br>Press Releases<br>Postal Letters<br>Information Leaflets<br>Education in Schools<br>Billboards |
|--|---|--|

There are lots: don't read them all!

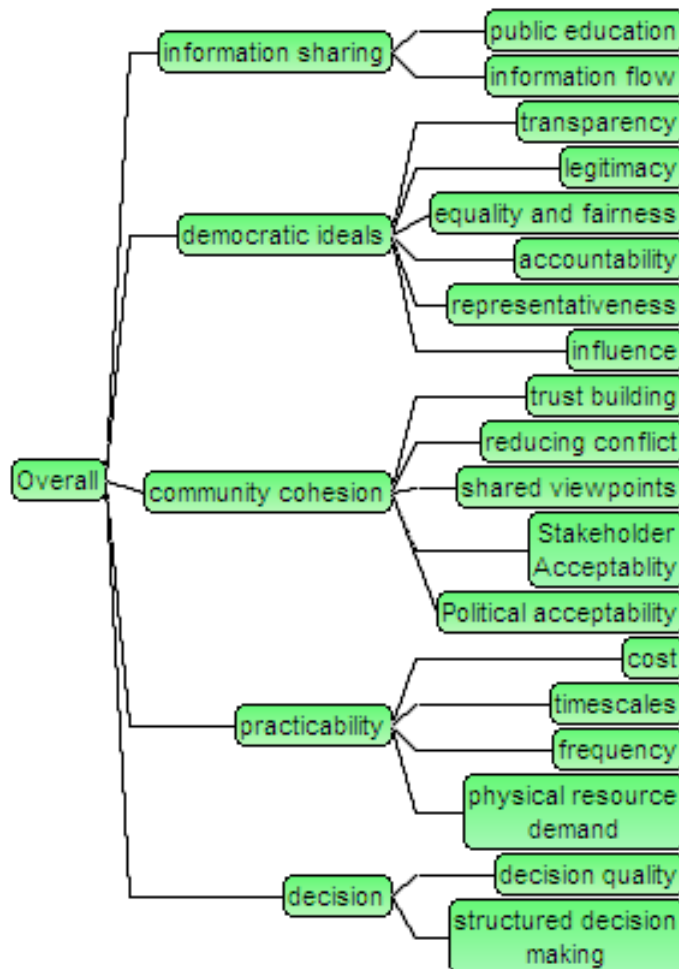
# Participation and e-Participation

- Lots of possible instruments
- Lots of terminology ... usually inconsistent!
- Lots of evidence that each is better than no participation
- Few comparative studies
- Almost no guidance on combining instruments into a participation process

# First steps: participation in analysis

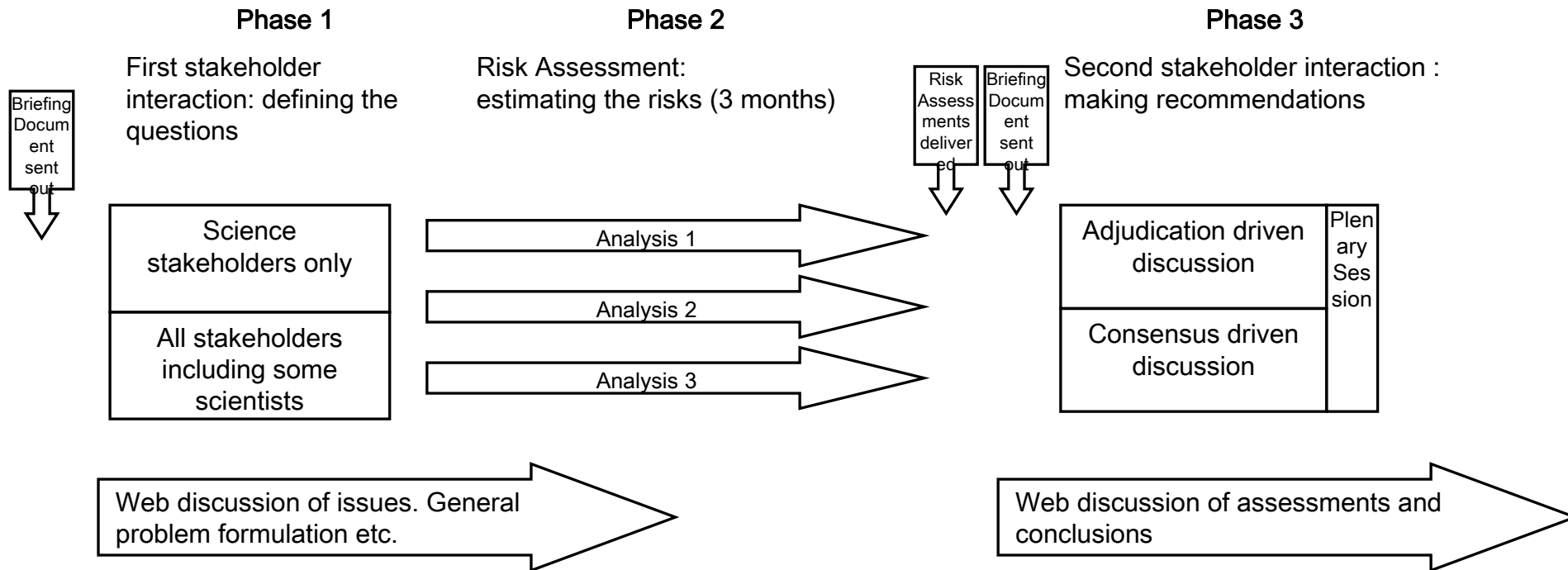


# Possible objectives in design of participatory process



- If we take a democratic ideal perspective, principles matter most.
- If we take the perspective of a regulator, the choice is based upon more pragmatic attributes

# Plan of first study





# Volunteers needed!

- First workshop March 8<sup>th</sup>, Westminster
- Second workshop early June
- See Clare Bayley if you are interested