

Sustainable Uplands

Managing Uncertainty in Dynamic Socio-Environmental Systems



Klaus Hubacek and Mark Reed

With:

Tim Burt, Pippa Chapman, Stephen Cornell, Evan Fraser, Andy Dougill, Joe Holden, Brian Irvine, Mike Kirkby, Bill Kunin, Christina Prell, Jan Sendzimir, Sigrid Stagl, Andy Turner, Fred Worrall

Plan

- Results from our Scoping Study
- How these can provide methodological insights into the difficulties of implementing EU environmental directives



Project Goal 1

To help people better anticipate, monitor & adapt to rural change in UK uplands

- Visions for a sustainable future from multiple users
- Scenarios of future change and management responses
- Integrated modelling and stakeholder dialogue combined in a learning and decision-making process

Project Goal 2

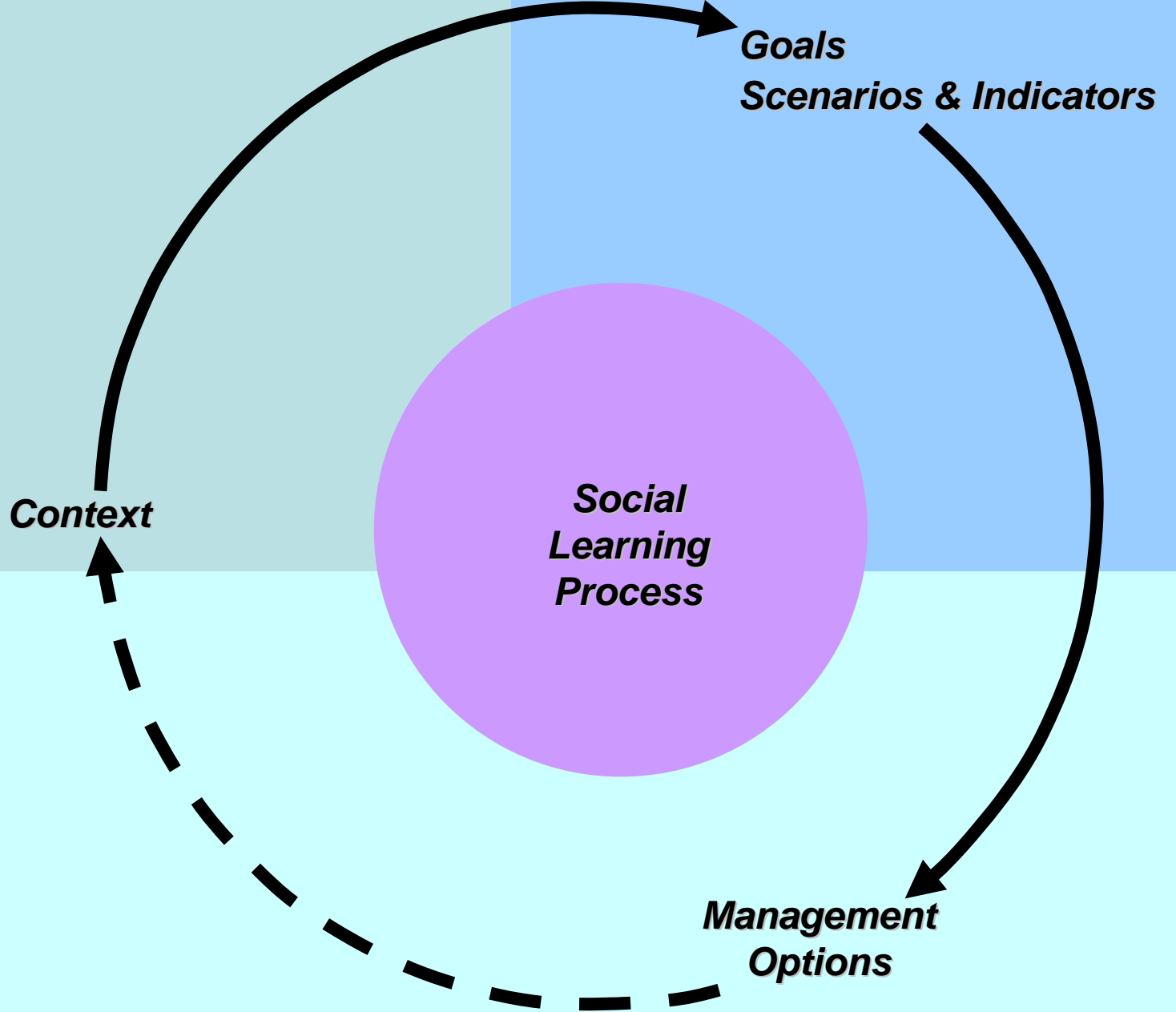
To develop tools and methods that can help ‘move research upstream’

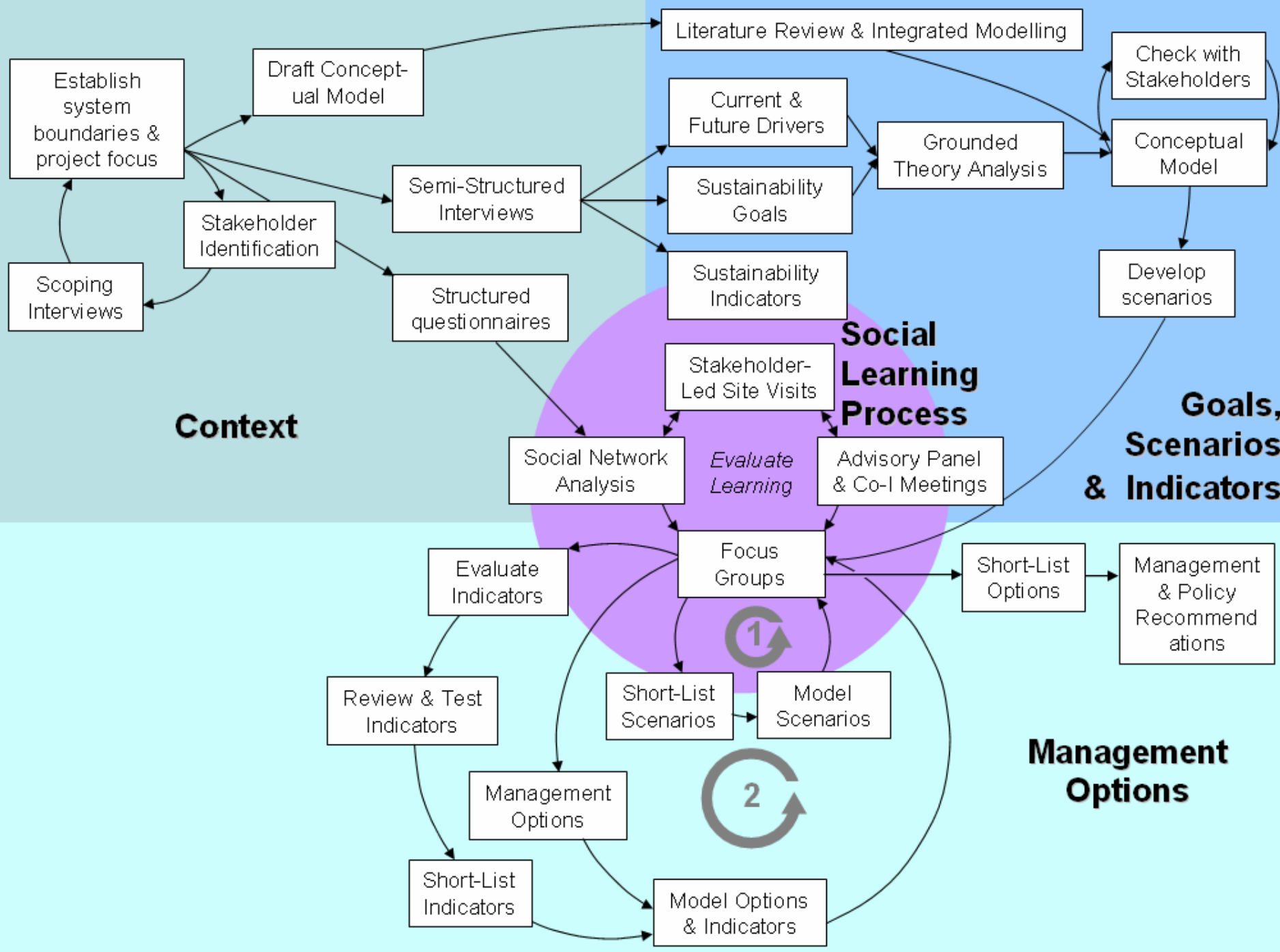
- by including stakeholders at the outset
- And throughout the process
- Including evaluation and analyses

Project Goal 3

Two-way learning & meaningful interaction between:

- i) different stakeholder groups
- ii) social and natural scientists
- iii) stakeholders and researchers





Context

Social Learning Process

Goals, Scenarios & Indicators

Management Options



Establish system boundaries & project focus

Draft Conceptual Model

Stakeholder Identification

Semi-Structured Interviews

Structured questionnaires

Scoping Interviews

Literature Review & Integrated Modelling

Current & Future Drivers

Sustainability Goals

Sustainability Indicators

Grounded Theory Analysis

Check with Stakeholders

Conceptual Model

Develop scenarios

Stakeholder-Led Site Visits

Social Network Analysis

Advisory Panel & Co-I Meetings

Evaluate Learning

Focus Groups

Short-List Options

Management & Policy Recommendations

Evaluate Indicators

Review & Test Indicators

Short-List Scenarios

Model Scenarios

Management Options

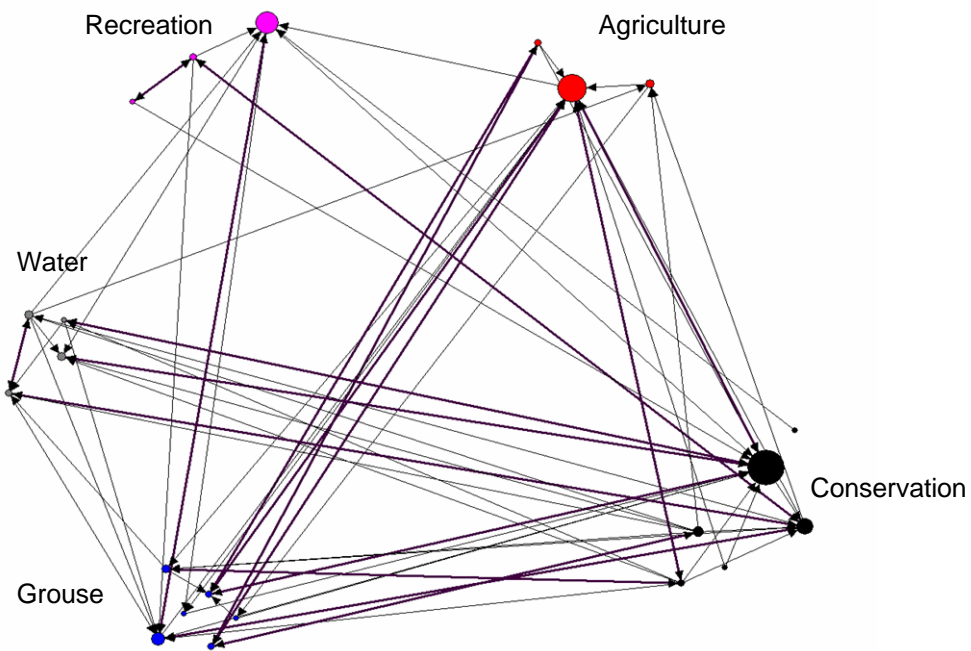
Short-List Indicators

Model Options & Indicators

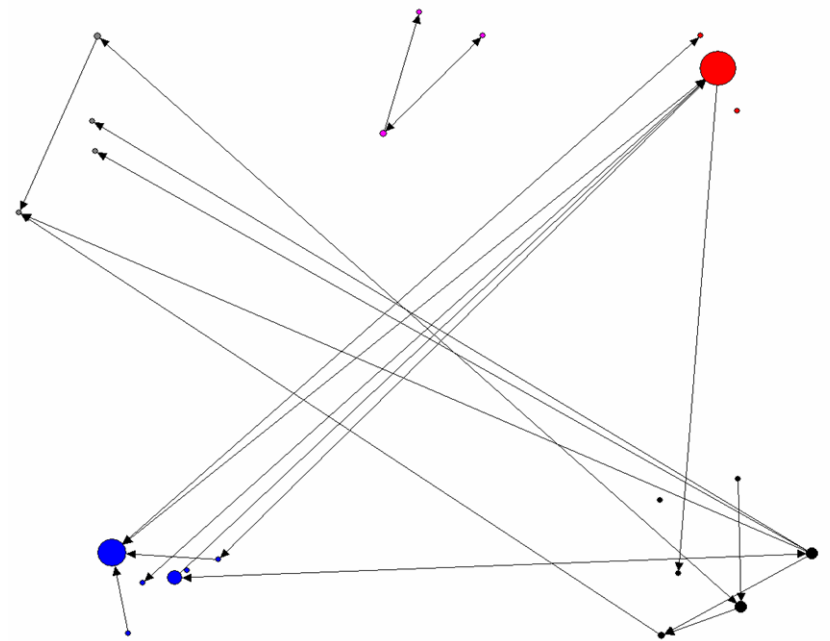
How do we select relevant stakeholders?

- Stakeholder analysis
- Social network analysis

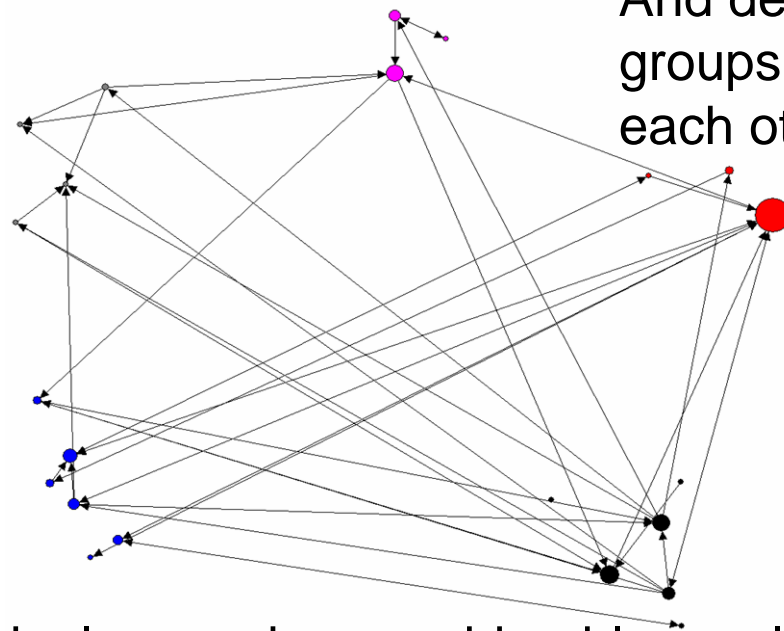




Despite apparently polarised views on burning, upland stakeholders in the Peak District are highly connected...



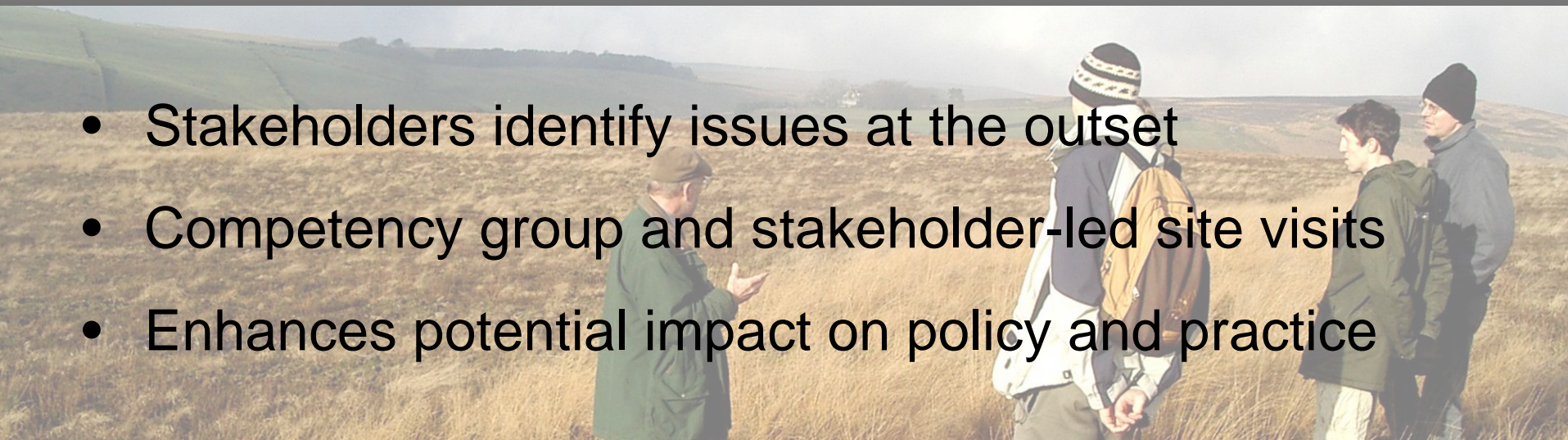
And despite the fact that certain groups have little contact with each other...



The majority of individuals perceive considerable overlap between their views on upland management and the views of those they know from other groups

How do we move the stakeholder process 'upstream'?

- Stakeholders identify issues at the outset
- Competency group and stakeholder-led site visits
- Enhances potential impact on policy and practice



DEFRA's Heather & Grass Burning Review

- Unique opportunity to provide a multi-stakeholder response that provided a voice to groups that may otherwise not have been involved
- Positive response from stakeholders
- “This is the first time all these people have sat round the same table with each other. Until this project came along, I don't think any of us would have believed we'd be sitting here.”

Participation and EU directive implementation

- Target key players
- Invite people who can 'carry' their community
- Identify effective cross-section of participants

