

## RDA Perspective

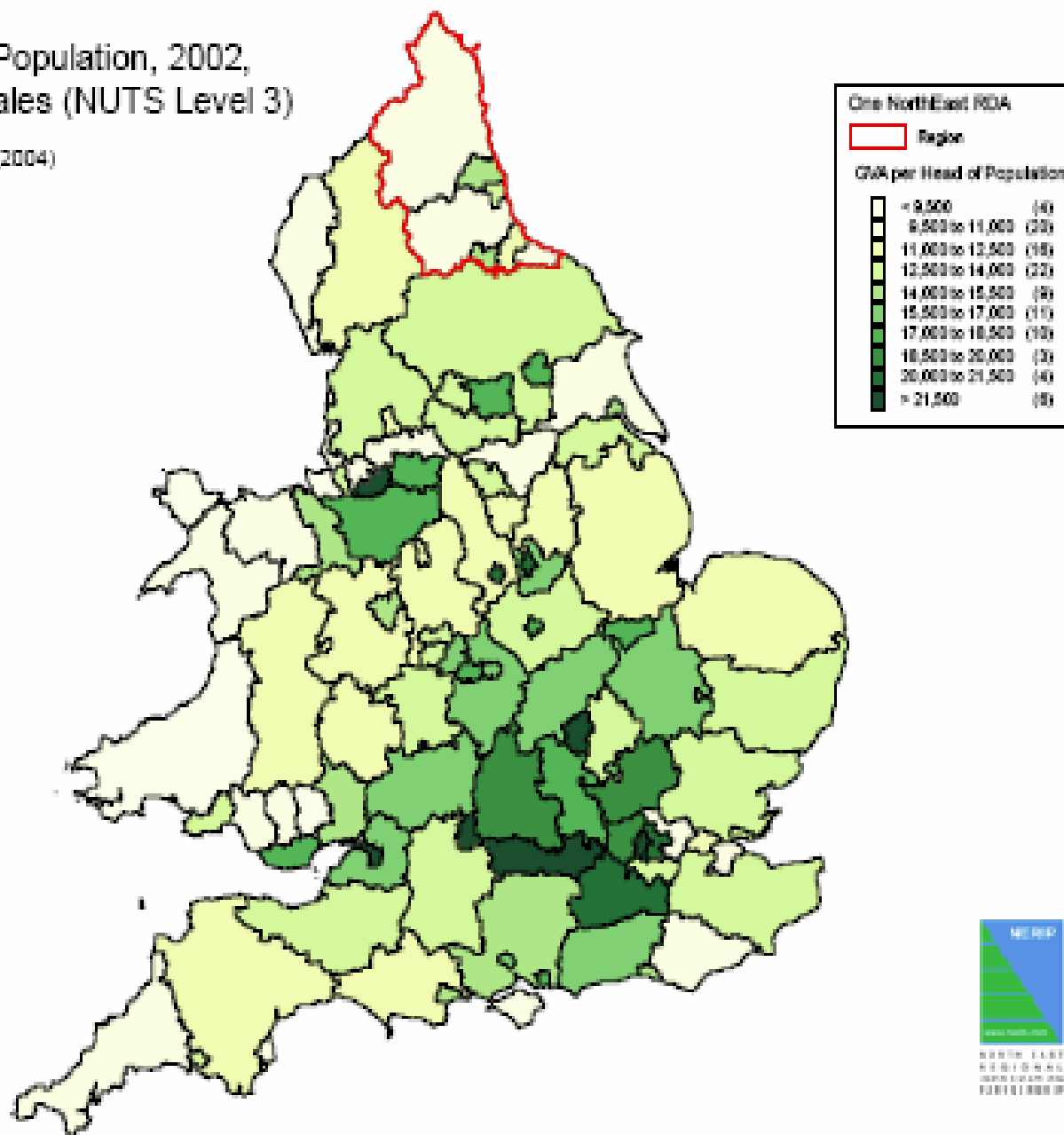
Tom Warburton  
Head of Regeneration, One NorthEast

# Regional Development Agencies



# GVA (£) per Head of Population, 2002, NUTS 3 England and Wales (NUTS Level 3)

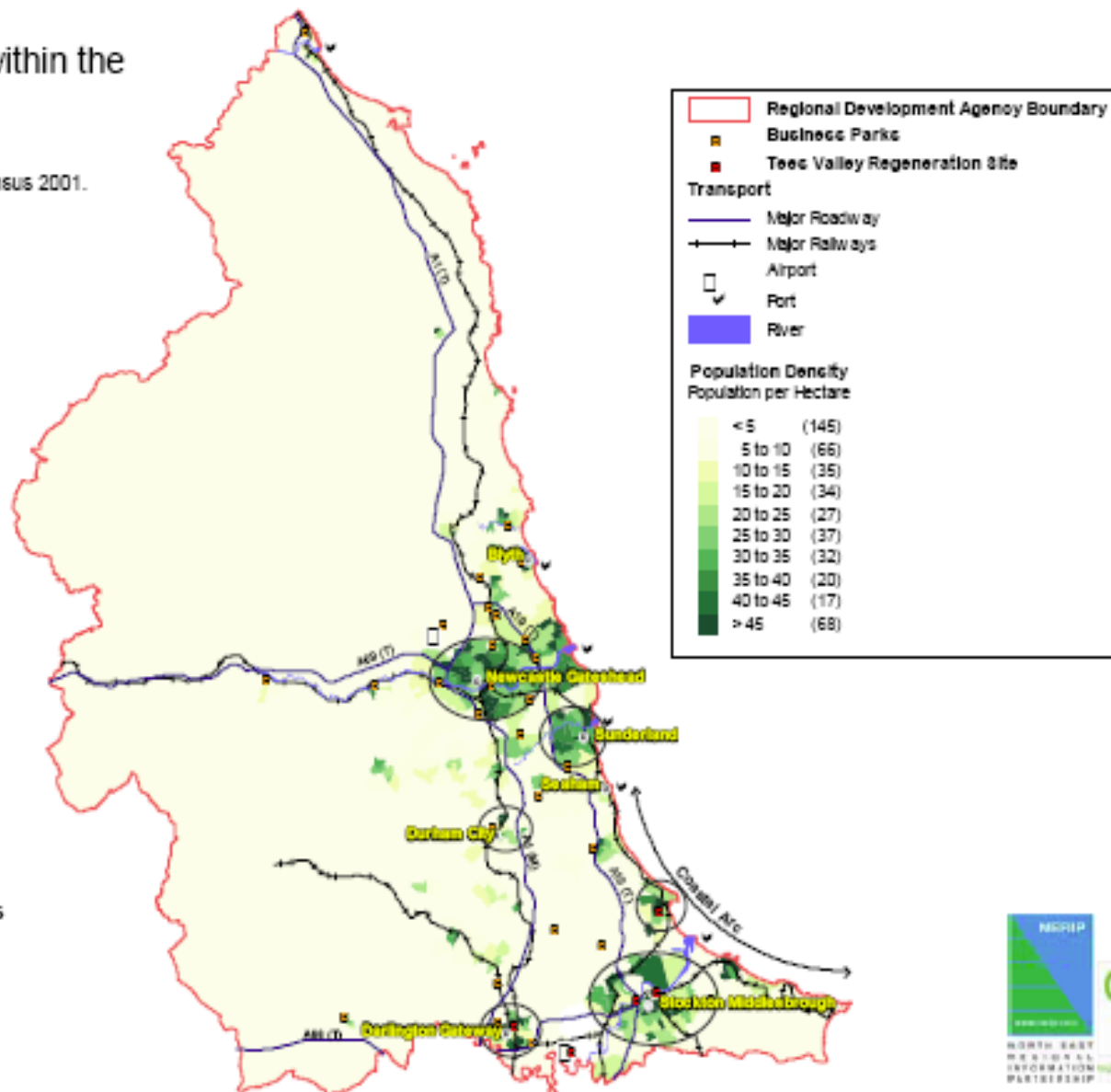
Source: Office for National Statistics (2004)



© Crown Copyright. All Rights Reserved. (One NorthEast)  
(Licence: 100021101) 2005.

# Map of Key Locations within the North East

Source: One NorthEast, 2005  
Office for National Statistics, Census 2001.

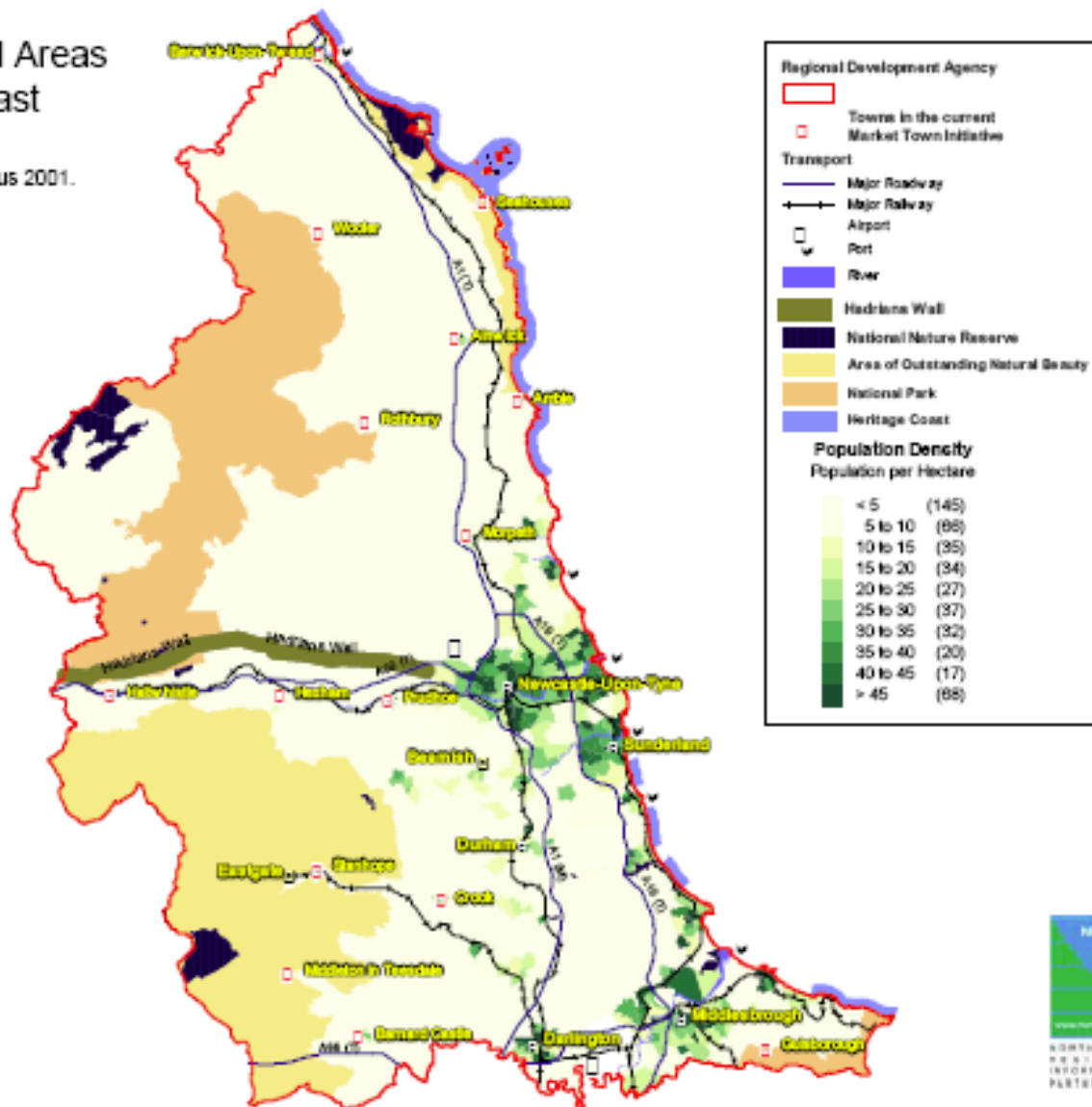


© Crown Copyright. All Rights Reserved. (One NorthEast) (Licence: 100021101) 2005.

0 10 20  
kilometres

# Map Highlighting Rural Areas within the North East

Source: One NorthEast, 2005  
Office for National Statistics, Census 2001.



© Crown Copyright. All Rights Reserved. (One NorthEast)  
(Licence: 100021101) 2005.

0 15 30  
kilometres

- "... the view that regional inequality is not inevitable, but that ending it requires both a bottom-up approach and one that aims to strengthen the essential building blocks of growth - innovation, skills, the development of enterprise - by exploiting the indigenous strengths in each region and city."

# Why Do We Need Innovation in Regional Policy?



- ❑ Disparities between regions and within regions
- ❑ Constrains national growth
- ❑ Constrains quality of life and opportunities
- ❑ Constrains ability to achieve **sustainable development**

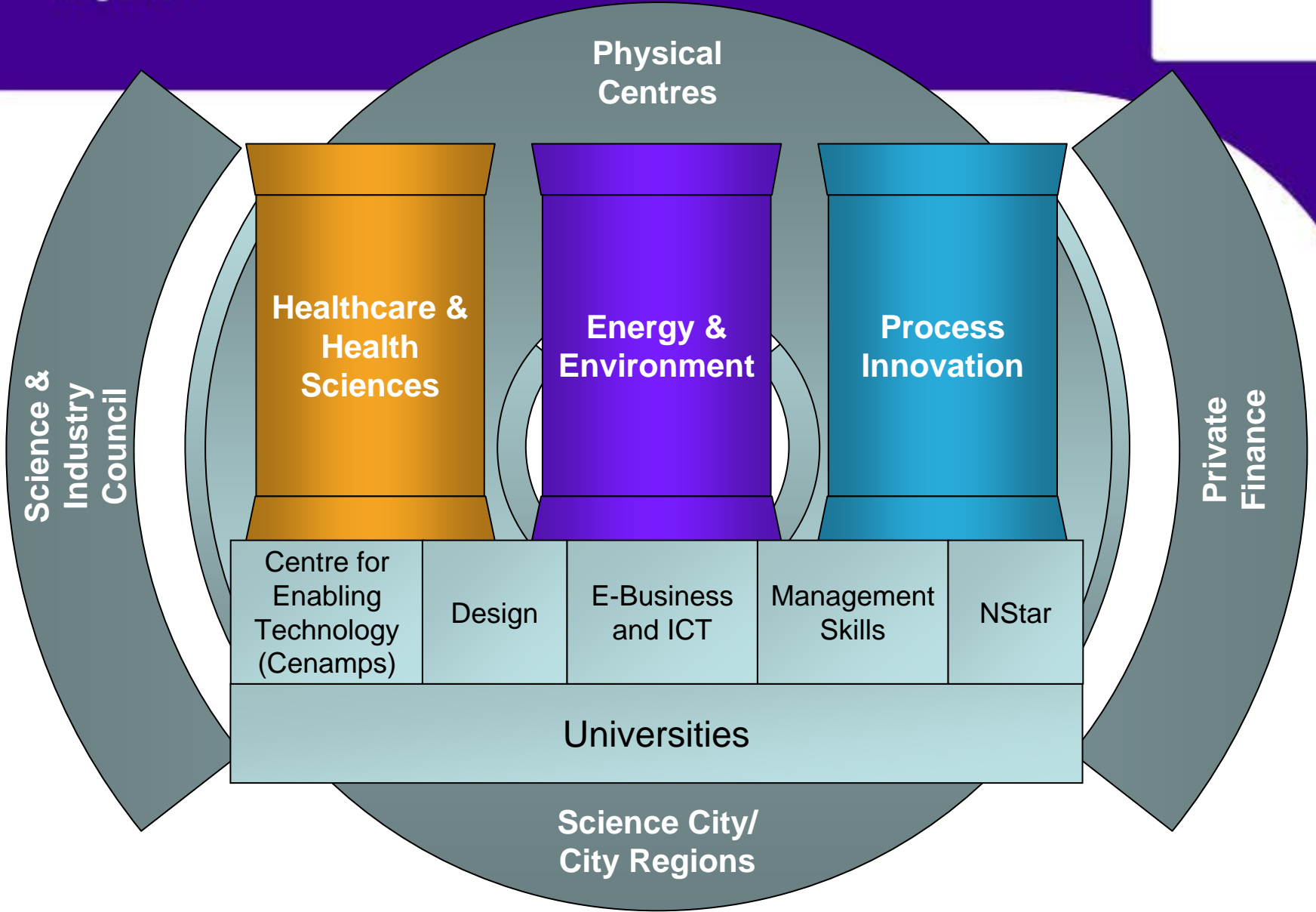
- “The development of new, internationally competitive, and knowledge intensive economic activities in the North East by the strengthening of its research base, more extensive and effective innovation in existing and new businesses, and, in particular, a step change in linkages between the research base and businesses to achieve this strengthening of research and innovation.”



## Relationship between research and regional development



- ❑ R&D key driver of regional competitiveness
- ❑ Create competitive advantage in emerging market niches
- ❑ Opportunities from companies increasingly outsourcing R&D
- ❑ High value innovation – competing on quality and functionality rather than on cost
- ❑ Key skills
- ❑ But historically poor performance of North East



- “Establish Newcastle as one of the world’s premier investment locations for scientific activity in the focus areas, for maximum economic benefit”
- Change NE industrial structure to focus on R&D and high value added technological innovation
- Impact on population and economy Region-wide
- Formed unique partnership
- New institutional and funding arrangements

- Main physical focus on Brewery site but activity wider in both type and location
- Business with Science areas:
  - Ageing and Health
  - Energy and Environment
  - Molecular Engineering
  - Stem Cells and Regenerative Medicine
- Full integration and co-location
- Specialist business support and commercialisation
- Public Engagement and Education
- Specialist infrastructure and translational facilities





## □ Examples:

- Science and technology
- Social policy and research



- ❑ Crystal Scientific
- ❑ X-ray optics for synchrotron radiation applications
- ❑ University spin out
- ❑ Rural Business Park location
- ❑ Clean room on site
- ❑ Guinness book of records for the manufacture of the thinnest mirror in the world!



- Centre for Rural Economy
- Link to RDA and rural delivery
- Rural Micro-Business Research
- MSc Placements
- Research and Best Practise
- Northern Rural Network

