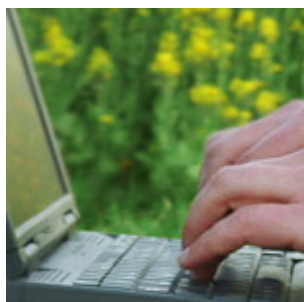


Relu news



October 2008

Contents:

- 1 Models pose question for stalkers: Where have all the deer gone?
- 2 New Zealand policy maker plunges into Water Framework Directive
- 3 Relu helps young researchers build interdisciplinary careers
- 4 Carbon storage research cited in Parliament
- 5 Researcher pursues life cycle analysis into Unilever
- 6 Will consumers pay more for local food?
- 7 Last chance to comment on land use challenge paper
- 8 What is Land For?
- 9 Interdisciplinarity: join the debate
- 10 Successful Relu PhD students
- 11 Relu Data Management advising Australian National Data Service
- 12 Researcher podcasts on upland challenges
- 13 UK-USA Research collaboration on ecology of infectious diseases
- 14 Relu people

1 Models pose question for stalkers: Where have all the deer gone?

The *Collaborative Deer Management* project is using Participatory GIS to go beyond ecologically-based wildlife-habitat models and learn from stalkers and gamekeepers about deer ranging behaviour. Initial analysis reveals that discrepancies between predictions and observed deer distribution are due in part to differences in the way that scientist and practitioners weight the importance of habitat and shelter. The new model is being tested at a series of workshops where natural and socio-economic researchers are discussing with practitioners the value of this approach to address specific conflicts and barriers to collaboration. For more information see the project's latest newsletter at <http://www.macauley.ac.uk/RELU/>. <http://www.relu.ac.uk/research/projects/SecondCall/Irvine.htm>

2 New Zealand policy maker plunges into Water Framework Directive

Sandra Barns has joined the Relu *Modelling Impacts of the Water Framework Directive* project team at the University of East Anglia as a Marie Curie Research Fellow. This award is for one year and brings Sandra to the UK from New Zealand where she is employed as an environmental economist within local government, looking at ways of implementing national environmental policy at a regional

level. On the Relu project she will undertake a series of farm surveys designed to provide information on how agricultural systems are managed across a range of farm types, and how that management may change in response to policy change – most notably as a result of the implementation of the Water Framework Directive within a context of ongoing CAP reform.

<http://www.relu.ac.uk/research/projects/SecondCall/Bateman.htm>

3 Relu helps young researchers build interdisciplinary careers

Norfolk Broads Futures and Science Communication on Badgers and TB are the topics that Relu's two new interdisciplinary research fellows will be pursuing. Dr Katheryn Appleton at the University of East Anglia will examine the sustainability of different patterns of future recreational use of the Ant catchment of the Norfolk Broads. Dr Angela Cassidy at the Institute of Food Research will investigate the way that science communication has structured and been structured by the controversy surrounding badgers and TB. These two awards have been made under the RCUK's Interdisciplinary Early Career Fellowship scheme. The three-year long fellowships are intended to support the early career development of researchers who are seeking to pursue interdisciplinary careers, providing necessary training and research support. Both Katheryn and Angela have already been employed on Relu research projects.

4 Carbon storage research cited in Parliament

David Maclean, MP for Penrith and the Borders, cited the work being done by the Relu *Sustainable Uplands* project and Moorlands for the Future on carbon storage in the uplands and the need to restore the peat in order to maximise this effect. The research on carbon sinks has also been fed into a Value for Money report by the National Audit Office.

<http://www.publications.parliament.uk/pa/cm200708/cmpublic/climate/080701/pm/80701s10.htm>

5 Researcher pursues life cycle analysis into Unilever

Llorenç Mila I Canals worked for three years as a research officer on the Relu project *Comparative Merits of Consuming Vegetables Produced Locally and Overseas* doing environmental life cycle analyses of vegetable supply chains. Although he had an academic career in mind, when an opportunity to join Unilever came up in March 2008 he decided to give the commercial sector a try (<http://www.unilever.co.uk/ourcompany/careers/careerprofiles/seac/>). He said: "The level of the research debate in this industry is extraordinarily high, and given the current strong interest in sustainability issues along the food supply chain my experience in the Relu project has been very well received. In particular, the work with social scientists has helped me to better understand consumers' expectations in relation to food, and working with soil scientists has proven key to grasping the uncertainties underlying the carbon footprints of food produce."

6 Will consumers pay more for local food?

Relu researcher Henry Buller called on farmers to pool their efforts in marketing local foods at the Relu-sponsored 2008 Sustainable Development Research Network conference. His research shows that consumers will pay more for meat and cheese from specific "terroirs". Richard Tiffin also presented results from Relu research that endorsed this view that consumers place an added value on local food. Details of the conference and presentations are available at: <http://www.sd-research.org.uk/post.php?p=904>

7 Last chance to comment on land use challenge paper

Relu land use policy analysts Vicki Swales and Alan Woods have been identifying the challenges for policy makers arising from Relu research on land and water use. The consultation period on their land use challenge paper will end on 8 October so if you have comments on the three main strategic policy questions: How do we achieve more democratic and accountable decisions? How do we achieve multiple objectives from land and water? How can our use of land and water help to tackle climate change? There is still just time to email them to us. You will find the paper on the Relu website at <http://www.relu.ac.uk/about/Challenge%20Paper%20consultdoc%20060908.pdf> Please e-mail your contributions to relu@ncl.ac.uk by 8 October 2008.

8 What is Land for?

Relu Director Philip Lowe will be giving the opening address in the Birkbeck, University of London, autumn 2008 public lecture series, "What is land for?", at 6.30 pm on Friday 17 October. His lecture, drawing on Relu research, is titled: "Whose land is it anyway? And how can government policy reconcile competing demands on it in an era of climate change?" The lecture series is being held at Birkbeck in conjunction with the Ecology and Conservation Studies Society. Admission is free but tickets must be obtained in advance. See details at <http://www.bbk.ac.uk/ceresearch/cepar/documents/2008bECSS.pdf.pdf>, email environment@fil.bbk.ac.uk or telephone 020 7679 1069 for tickets.

9 Interdisciplinarity: join the debate

Experienced Relu researchers have posed new questions on the Relu website's interdisciplinarity discussion pages. Justin Greaves posts thoughts on the need of the "Google generation" for more interdisciplinary science in his article "Interdisciplinary Research: some practical, methodological and philosophical reflections" <http://www.relu.ac.uk/research/Greaves%20Interdisc%20Response.pdf>. Norman Dandy asks which problems interdisciplinarity can best address and whose interests it serves <http://www.relu.ac.uk/research/Interdisciplinarity%20N%20Dandy.doc>. Comments and further thoughts on this topic will be welcome - email to relu@ncl.ac.uk.

10 Successful Relu PhD students

Paul Cross, who has been working with the Relu project *Comparative Merits of Consuming Vegetables Produced Locally and Overseas* has now been awarded his PhD. A further five students have been funded to undertake PhD research in connection with projects from the Relu third call.

11 Relu Data Management advising Australian National Data Service

Andrew Treloar of the Australian National Data Service has met with the Relu Data Support Service to find out more about RELU's approach to data policy and data management planning across disciplines. The Australian National Data Service is developing frameworks for data management planning for institutions and researchers in Australia.

12 Researcher podcasts on upland challenges

Relu's *Sustainable Uplands* project is tapping into local expertise to model potential futures for upland areas. Hear researcher and stakeholder perspectives in a podcast on NERC's Planet Earth On-line at <http://www.planetearth.nerc.ac.uk/multimedia/story.aspx?id=5>.

13 UK-USA Research Collaboration on Ecology of Infectious Diseases

The Economic and Social Research Council and the National Science Foundation and National Institutes of Health have announced that they will jointly support collaborative research on the Ecology of Infectious Diseases involving collaborative UK-USA research teams. Projects must include a substantial focus on the roles of socio-ecological factors and processes on disease transmission dynamics. Details may be found at http://www.esrcsocietytoday.ac.uk/ESRCInfoCentre/opportunities/international/esrc-nsf_eid.aspx.

14 Relu people

- Director of the Tyndall Centre **Andrew Watkinson** has been appointed Director of the major Living With Environmental Change programme.
- **Angela Karp** Scientific Director of the Rothamsted Research Centre has been awarded the 2008 Alfred Toepfer Prize for Agriculture, Forestry and Nature Conservation.
-

Andrew Jordan from the University of East Anglia has been elected as a member of the Academy of Social Sciences.

- Following the Relu response to the Defra draft Soil Strategy **Lindsay Stringer** from the University of Leeds was invited to attend the Sustainable Agriculture and Soil Conservation international workshop in Bristol.
- **Mark Reed** has become the first UK researcher to be awarded a joint fellowship

between the US Social Science Research Council and ESRC to visit researchers from the US National Science Foundation funded Coupled Natural-Human Systems programme.

- Relu interdisciplinary Research Fellow **Evan Fraser** has just published a new book. "Beef: The Untold Story of how Milk, Muscle and Meat Shaped the World", coauthored with Andrew Rimas, came out in the United States September and will be published in the UK in February by Mainstream. "Beef" draws on research carried out as part of the Relu *Sustainable Uplands* project. More information at <http://www.andrewrimas.com/>. The two authors have another book in the pipeline "Empires of Food" which also draws on Evan's research.
- **Chris Quine** and **Mariella Marzano** gave a presentation at a workshop on tick-borne diseases organised by EPIC - the Scottish Government's Centre of Excellence in Epidemiology, Population Health and Disease Control in Perth.
- **Wyn Grant, David Chandler** and **Alastair Bailey** presented papers from their Relu projects to an audience of manufacturers, consultants, regulators and academics at the Society of Insect Pathologists meeting at Warwick.
- **Mark Reed** and **Claire Quinn** both presented to audiences of land agents at events organized by the Royal Institution of Chartered Surveyors.

Rural Economy and Land Use Programme
Centre for Rural Economy
School of Agriculture, Food and Rural Development
University of Newcastle
Newcastle Upon Tyne
NE1 7RU
Tel. 0191 222 6903
Fax: 0191 222 5411
E-mail: relu@ncl.ac.uk

To subscribe or unsubscribe to our quarterly e-newsletter,
please go to <http://www.relu.ac.uk/contact/subscribe.htm>