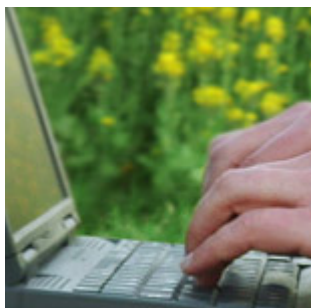


Relu news



January 2013

Contents

- 1 Water company works with farmers to reduce pollution
- 2 New networking website for rural professionals
- 3 Prestigious international award recognises achievements of Relu
- 4 Global food security scoping workshop draws on land use research
- 5 Report points way for development of veterinary services in food chain
- 6 Valuing Nature Network stocktaking event
- 7 Catchment change calendar targets farmers
- 8 LWEC knowledge exchange guidelines launched
- 9 Biopesticides book available in paperback
- 10 ESPA conference draws in role of valuation in ecosystem services
- 11 Spreading the lessons from Demonstration Test Catchments
- 12 New book on governance of livestock disease out soon
- 13 New opportunities from ESPA-2013
- 14 LWEC Assembly films available on line
- 15 More knowledge needed to manage pollination problems
- 16 Bringing together conservation and human wellbeing
- 17 Science and Public Policy focuses on interdisciplinary research
- 18 New online resource of ecosystem service mapping projects
- 19 Relu people

1 Water company works with farmers to reduce pollution

Farmers with land close to the river Fowey in Cornwall are getting a helping hand from South West Water to make improvements to their farms that in turn will help reduce pollutants seeping into the river. South West Water has teamed up with the University of East Anglia and the Westcountry Rivers Trust in [a pilot scheme](#) that puts a value on natural resources – in this case, the river water – and pays to help preserve it. The company has made £360,000 available, for which the farmers have been bidding in the first ever ‘valuing nature auction’ of its kind in the UK. If you are a business or government organisation and would like to know more about this approach – please contact Ruth Welters, NERC business internship holder on 01603 591 384 or R.Welters@uea.ac.uk

2 New networking website for rural professionals

An experimental new [Landbridge](#) networking website for rural professionals has just gone live. Landbridge provides a platform for interprofessional learning and opportunities for knowledge exchange with the research community. The challenges facing farmers and land managers have been exacerbated by pressures such as climate change and food security, and improving the skills and knowledge of the people who provide them with specialist advice, such as land agents, vets, ecologists and agronomists, has become a key imperative for the UK Government and for the industry. A panel from the professions has assisted with planning and implementing the initiative and continues to advise on its development. Landbridge is supported by the Economic and Social Research Council, Rural Economy and Land Use Programme and the Living With Environmental Change Partnership.

3 Prestigious international award recognises achievements of Relu

Relu Director Philip Lowe will be presented with the [Bertebos prize 2013](#) by the King of Sweden, on behalf of the Royal Swedish Academy, in Stockholm on 28 January. The prize is awarded in alternate years to an individual for distinguished and practical research in food, agriculture, ecology or animal health. The award reflects Philip’s significant contribution to sustainable rural development, land use management, and interdisciplinarity and specifically recognises the achievements the Relu programme.

4 Global food security scoping workshop draws on land use research

Relu Assistant Director and LWEC Land Use Fellow Jeremy Phillipson attended the international Belmont Forum workshop on “Food security and land use change” in Brazil in December. The [Belmont Forum](#) is developing collaborative research actions addressing the challenges posed by global environmental change, bringing together partnerships of natural and social scientists and research users and adding international value to the investments of member countries.

5 Report points way for development of veterinary services for food chain

The Veterinary Development Council (VDC) has issued [a report](#) on how the provision of veterinary services should be adapted to the need for safer, nutritious and affordable food for the population and for protecting the health and welfare of farm animals. The VDC was the brainchild of Relu Director Philip Lowe who proposed its appointment in his 2009 report, [Unlocking Potential](#), on the future of veterinary services.

6 Valuing Nature Network stocktaking event

The Valuing Nature Network event will be held on Tuesday 19 March 2013 in London. This event will highlight successes from the Network, including insights into partnership working between academia, policy and business; and the benefits of working across academic disciplines. Network speakers will show how the current [Valuing Nature Network projects](#) have addressed the 4 key

[research challenges](#) that were set out at the start of the initiative. [Register your interest](#) via the VNN website.

7 Catchment change calendar targets farmers

The Catchment Change Network has developed a calendar for farmers and land managers that aims to help reduce diffuse water pollution from agriculture by spreading the word about agricultural best practice. The messages highlight 12 key mitigation methods, one for each month of the year. The calendar is [available on line](#) or hard copies may be obtained from Marion Walker email marion.walker@lancaster.ac.uk

8 LWEC knowledge exchange guidelines launched

Effective exchange of information, ideas, expertise and people between research teams and research users is essential. New knowledge exchange guidelines launched by LWEC draw on good practice from across the Relu programme and other LWEC activities. In particular, research from Relu's Sustainable Learning project provided the basis for the guidelines. They [may be downloaded](#) from the LWEC website.

9 Biopesticides book available in paperback

[Biopesticides: Pest Management and Regulation](#) by A Bailey, D Chandler, W Grant, J Greaves, G Prince and M. Tatchell (2010) which draws on Relu research from [The role of regulation in developing biological alternatives to pesticides](#) and [Overcoming market and technical obstacles to alternative pest management in arable systems](#) projects is now [published in paperback by CABI](#) at £37.50.

10 ESPA conference draws in role of valuation in ecosystem services

Ecosystem Services for Poverty Alleviation held their [2012 ESPA Science Conference](#), in London in November, attracting over 50 participants from around the world, with numerous others watching the web-stream. The [website](#) has available the presentations from the three ESPA-2011 Consortia which will be moving to full scale operation this year. The ESPA Public Framework Grants informed delegates about the likely final outcomes for these projects, all of which will end during 2013. The posters they produced are also available on the website. [Keynote presentations](#) from external researchers examined the complexity and the role of valuation in linking ecosystem services for poverty alleviation.

11 Spreading the lessons from Demonstration Test Catchments

A new policy and practice note from the Defra-funded Demonstration Test Catchments (DTC) project uses a format developed by Relu to explain the important role that the DTCs are playing in addressing water pollution. The note is [available on line](#) and as hard copies. Contact anne.liddon@ncl.ac.uk.

12 New book on governance of livestock disease out soon

A new book from Relu's [Governance of Livestock Disease](#) team is being published by Routledge. *The Regulation of Animal Health and Welfare: Science, Law and Policy* by John McEldowney, Graham Medley and Wyn Grant with Jonathan Cave, Laura Green, Matthew Keeling, Justin Greaves, David Carslake, Habtu Weldegebriel and Amy Kilbride is due out in the spring. Details and pre ordering are available via the [publisher's website](#).

13 New opportunities from ESPA-2013

The latest funding opportunities for Ecosystem Services for Poverty Alleviation ESPA-2013 projects will address one of three themes:

- Sustainable, ecosystem-based pathways out of poverty
- Ecosystem services and the urban environment
- Building on ESPA Success

The call has been designed to enhance the academic and development impact of the ESPA programme by filling significant gaps in the ESPA portfolio and, where possible, capturing emerging opportunities. Applications are invited for funding in the range of between £200,000 and £500,000. Outline proposals must be submitted via email to espa@nerc.ac.uk by 16:00 GMT/UCT on 23 January 2013. [Full details](#) are available on the NERC website.

14 LWEC Assembly films available on line

Relu was well represented at the LWEC Assembly, “*Supporting the Journey to Adaptation*” in November. From [RuFopoly](#), a game exploring land-use decision-making at the rural/urban fringe, to an exploration of art, music and science which grew from the [Sustainable Uplands Project](#), Relu outputs were much in evidence and Assistant Programme Director, Jeremy Phillipson, was introduced as the new LWEC land-use fellow. The Environmental Sustainability Knowledge Transfer Network provided live-streaming and filming of the assembly meaning that plenary presentations and the flooding side event can be viewed by following links from the [LWEC TV webpage](#).

15 More knowledge needed to manage pollination problems

A report from the workshop [Insect pollinators: linking research and policy](#) highlights the need for a long term multi-scale scheme to monitor trends in pollinator populations. The workshop brought together 59 scientists, policy-makers and other stakeholders (including industry) from across Europe. They conclude that in order to manage the threats to pollinators, more information is needed about their basic ecology, their numbers, how they use different environments and how they interact with one another. The full report [may be downloaded](#) from the IPI website.

16 Bringing together conservation and human wellbeing

Over 160 people attended the Valuing Nature Network Wellbeing project final meeting on “Conservation and human wellbeing: Integrating local voices into natural resource management” in December. The workshop brought together researchers and practitioners to explore how a better understanding of human wellbeing can be integrated into conservation interventions to achieve effective outcomes that also benefit poor and disadvantaged groups. The [full agenda and the talks](#) are available on the Valuing Nature Network website.

17 Science and Public Policy focuses on interdisciplinary research

A special edition of [Science and Public Policy](#), focusing on interdisciplinary research is being published this year and features a paper on “Participatory interdisciplinarity: towards the integration of disciplinary diversity with stakeholder engagement for new models of knowledge production” by Liz O'Brien, Mariella Marzano and Rehema White and draws on data from Relu's [Collaborative Deer Management](#) and [Assessing and Communicating Animal Disease Risks for Countryside Users](#) projects. The paper examines the benefits and challenges of interdisciplinarity, stakeholder participation and of integrating the two approaches.

18 New online resource of ecosystem service mapping projects

The NERC Biodiversity and Ecosystem Services Directorate is launching an online survey of how ecosystem services are being mapped. With funding from Natural England, the project will develop a searchable online resource to provide a single gateway to the plethora of ecosystem service mapping activities being carried out across England. It will bring together a range of information, including which services are being mapped, at what spatial scales, and how the information is being used. Having a single, searchable site will help decision-makers understand how different ecosystem services are delivered across a landscape and contribute to strategic national and local environmental planning, including the development of Nature Improvement Areas and Local Nature

Partnerships. You can contribute to the survey by [clicking on this link](#) or contact Zoë Austin at the University of York (zoe.austin@york.ac.uk). If you know of anyone else involved in mapping ecosystem services, please pass on this link.

19 Relu people:

- **Alister Scott** who led Relu's [Managing Environmental Change at the Rural Urban Fringe](#) project gave keynote presentations to the Planning and Development Association in October and to the Economic Co-operation and Development's territorial rural working group in Paris in December.
- **Ian Bateman** who led Relu's [Modelling the Impacts of the Water Framework Directive](#) project gave a keynote presentation on "[Economics and ecosystem management](#)" at the [Ecosystems for Poverty Alleviation conference 2012](#).
- **Neil Ward** who is currently Executive Dean (Social Sciences) at the University of East Anglia takes up the post of Pro Vice Chancellor (Academic) in August 2013. He helped to scope and plan the Relu Programme and was co-investigator on Relu's [Understanding Environmental Knowledge Controversies](#) project.

Rural Economy and Land Use Programme
Centre for Rural Economy
School of Agriculture, Food and Rural Development
University of Newcastle
Newcastle Upon Tyne
NE1 7RU
Tel. 0191 222 6903
Fax: 0191 222 5411
E-mail: relu@ncl.ac.uk